

Groundswell Technologies, Inc. Newsletter

Winter 2011/2012

Mark Kram Awarded NGWA Technology Award

Groundswell Founder, Mark Kram, will receive the 2011 Technology Award from the National Ground Water Association. This award recognizes the outstanding contributions that Mark Kram has and continues to make toward the growth and well-being of the groundwater industry through development of innovative ideas and tools.



Currently Available Federal Contracting Channels

- * NAVFAC SW AOR Environmental Services Contract
- * N62583-08-R-0036 ID/IQ MAC for Environmental Engineering & Incidental Services

Conference Highlight

GT has been invited to present at the Nielsen North American Environmental Field Conference & Exposition in San Diego, CA. As a part of the event theme, Advances & Innovations in Environmental Site Characterization, Sampling, Monitoring, and Remediation Technology, GT will present the workshop entitled "Automated Sensor-Based Monitoring and Project Management on the Web." Join us from February 7th through 10th. Detailed schedules and registration information for this event can be found at <http://www.envirofieldconference.com>.

Dajak Representation

GT is pleased to announce that Dajak Characterization and Remediation Technologies is now a representative of GT's web-based environmental monitoring platform, Waiora 2.0.

Upcoming Conferences

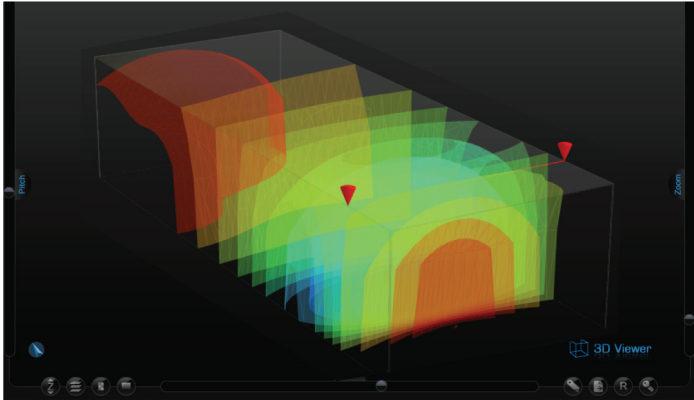
Come visit Groundswell Technologies at the following conferences:

Date	Conference
Nov 29 - Dec 1	SERDP & ESTCP's Symposium; Washington, DC (Poster)
Nov 29 - Dec 2	NGWA Expo; Las Vegas, NV (Booth)
Feb 7 - Feb 10	Nielsen Environmental Field Conference; San Diego, CA (Booth & Workshop)
Mar 19 - Mar 22	AEHS Conference; San Diego, CA (Workshop)
May 1 - May 2	Texas Commission on Environmental Quality Conf.; Austin, TX (Booth)

Industry Trends

Bioremediation Optimization

Since the mid-90s, bioremediation has become a viable groundwater restoration option. GT is currently tracking bioamendment activities using sensors and automated web based processing for high-frequency monitoring of key bioremediation parameters. Testing for specific geochemical indicator parameters, such as DO, ORP, Cl, conductivity and others before, during and following amendment introduction enables project managers to verify amendment distribution and treatment success. Data can be augmented with laboratory or sensor analyses for contaminants of concern to allow for mass flux assessment. GT's continuous geospatial rendering services allow for optimized applications through adjustments, remediation performance assessment, consensus based analyses, and streamlined reporting.

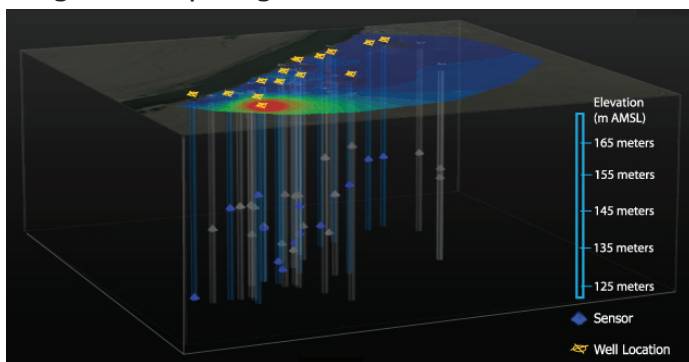


3D View of Nitrate Bioremediation Tracking

Waioira Feature Highlight

3D Sensor View

Waioira conveniently allows users to view their site in 3-D. The 3-D sensor view displays a profile of all site well locations and sensor depths superimposed on a site contour map from a selected layer. The image below shows a slice depth at 140 m AMSL projected on the surface. The user may zoom, pan, and rotate this view to effectively evaluate the vertical layout of site resources. As with all views in Waioira, the user may export 3-D sensor images for report generation.



Contact Us

Groundswell Technologies, Inc.
136 West Canon Perdido, Suite C
Santa Barbara, California 93101
805-899-8142
sales@GroundswellTech.com
www.GroundswellTech.com

Technology Corner

The Snap Sampler by ProHydro, Inc.

The Snap Sampler is a passive in-place sampling device that collects undisturbed water samples down well without the need for well purging. Samples are collected in double-ended bottles using a surface triggering mechanism that snaps the bottle closed. The sample is retrieved for laboratory analysis without sample exposure to the open air. The Snap Sampler consists of four components: a double-ended bottle with spring-loaded Teflon end caps, a sampler body with trigger mechanism that closes the bottles, a trigger line, and a docking station. Bottles are available in 40 ml glass VOA vial; or 125 ml and 350 ml plastic.



The Snap Sampler is an excellent complement to remote sensor-based monitoring since water sampling can be triggered to exactly correspond to sensor reading times, offering data validation and supplemental analytical coverage. Triggering options include mechanical (manual), pneumatic, and electric triggers. Combined with telemetry and the Waioira platform, sampling can be triggered remotely for subsequent retrieval.
<http://www.snapsampler.com/>