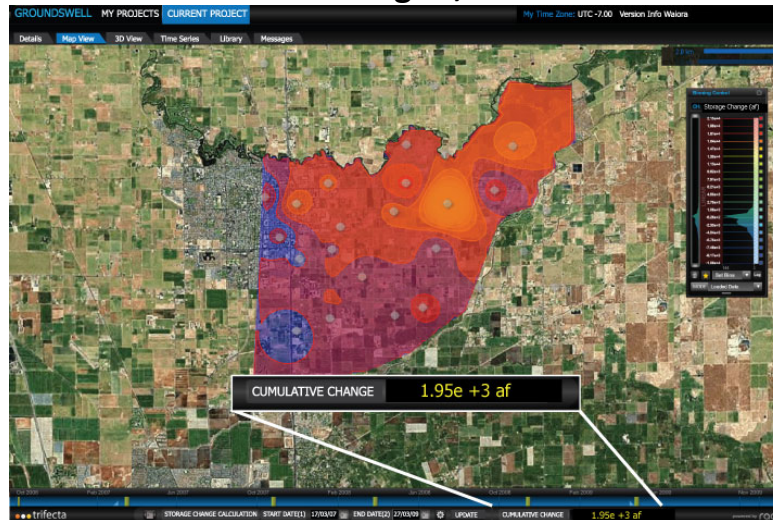


## Groundswell Technologies, Inc. Press Release



### ***Groundswell Releases GBST Module for Monitoring Groundwater Basin Storage***

**Santa Barbara, CA, August 10, 2010** – Groundswell Technologies, Inc. (GT) is pleased to announce the release of their Groundwater Basin Storage Tracking (GBST) module for automated water resources management. This web-based software application enables water purveyors to seamlessly track, archive, and visualize groundwater data acquired from sensor networks. GBST allows users to continuously monitor changes in aquifer volume between any two selected time steps. Spatial distributions as well as cumulative storage volumes are automatically displayed and become readily available for detailed analyses and export to reports. Applications include groundwater supply monitoring, water banking, aquifer storage and recovery, and stormwater infiltration accounting. Unlike traditional approaches, incoming water level data is automatically archived and instantly becomes available for detailed storage change assessment. Software installations are not required. Using a web browser, decision makers can rapidly determine how much water is available above a specific baseline, evaluate changes due to seasonal and annual influences, evaluate the effectiveness of artificial recharge activities, and instantly see where the changes have been most pronounced. GBST can also track multiple aquifers simultaneously.

Since the GBST module resides on GT's leading edge Waiora 2.0 platform, other powerful features such as time-series plotting, water gradient contouring, model calibration and 3D analysis are included. In addition to water resource management, Waiora 2.0 also enables automated real-time monitoring of water quality for all parameters for which robust sensors exist. The data is automatically archived, enabling multiple users to simultaneously inquire and customize their graphic outputs. Data tables, charts and images can be exported to reports as-needed.

Our software's unique geospatial intelligence brings intuitive simplicity to complex environmental issues. Simply log on to GT's innovative monitoring platform to experience the new standard for intelligent water resource management.

#### **About Groundswell Technologies, Inc.**

Groundswell is a global leader in automated earth monitoring software solutions. Our patented geospatial software platform is the world's first web-based solution for automating data collection, time-stamped archiving, model calibration, and on-demand data visualization comprised of time-series plots, contour maps, and 2D/3D/4D animation loops.

For additional information, please visit [www.GroundswellTech.com](http://www.GroundswellTech.com), contact [sales@GroundswellTech.com](mailto:sales@GroundswellTech.com), or call one of our corporate sales representatives at 805-899-8142